



Environment and Community Panel
Tuesday, 9th April, 2024 at 4.30 pm
**in the Council Chamber, Town Hall, Saturday Market
Place, King's Lynn PE30 5DQ**

**Reports marked to follow on the Agenda and/or Supplementary
Documents**

1. **Climate Change Update Presentation** (Pages 2 - 17)

Contact

Democratic Services
Borough Council of King's Lynn and West Norfolk
King's Court
Chapel Street
King's Lynn
Norfolk
PE30 1EX
Tel: 01553 616394
Email: democratic.services@west-norfolk.gov.uk

West Norfolk Climate Change Strategy update

2

9 April 2024

Ged Greaves – Climate Change Manager

Borough Council of
King's Lynn &
West Norfolk



Context: Climate change priorities

Council net zero by 2035
Territorial emissions net zero by 2050 (national target)

Phase 1 - Reducing BCKLWN Emissions

1. Gas consumption
2. Council vehicle fleet
3. Electricity consumption
4. Transmission and distribution losses
5. Water supply and water treatment
6. Business travel
7. Contractor travel (refuse collection)
8. Residual emissions: tree planting
9. Other: Procurement
10. Other: Corporate changes

Phase 2 - Reducing District Emissions

1. Industry, commercial and public sector
2. Domestic
3. Transport
4. Land use, land use change and forestry (LULUCF)



Council carbon footprint 2022/23 estimations

Gross emissions – 3256.56, 5% reduction
Offsetting/Renewables – 885.09, 4% reduction
Net emissions – 2371.47, 5% reduction

Scope 1 emissions (t CO2e)

Gas – 1128.95, 11% reduction
LPG – 2.94 no change
Oil – 0, no change

Vehicle fleet

Petrol – 34.25, 371% increase
Diesel – 282.97, 18% reduction
Red diesel – 0, 100% reduction

Scope 2 emissions (t CO2e)

Electricity – 885.09, reduction of 4%

Scope 3 emissions (t CO2e)

Total – 1239.38, 2% increase

Transmission and Distribution losses – 1% reduction
Minor values from Fully electric or hybrid business travel

Water supply – 12.06, 20% increase
Water treatment – 15.35, 11% increase

Business travel (small, medium, large)

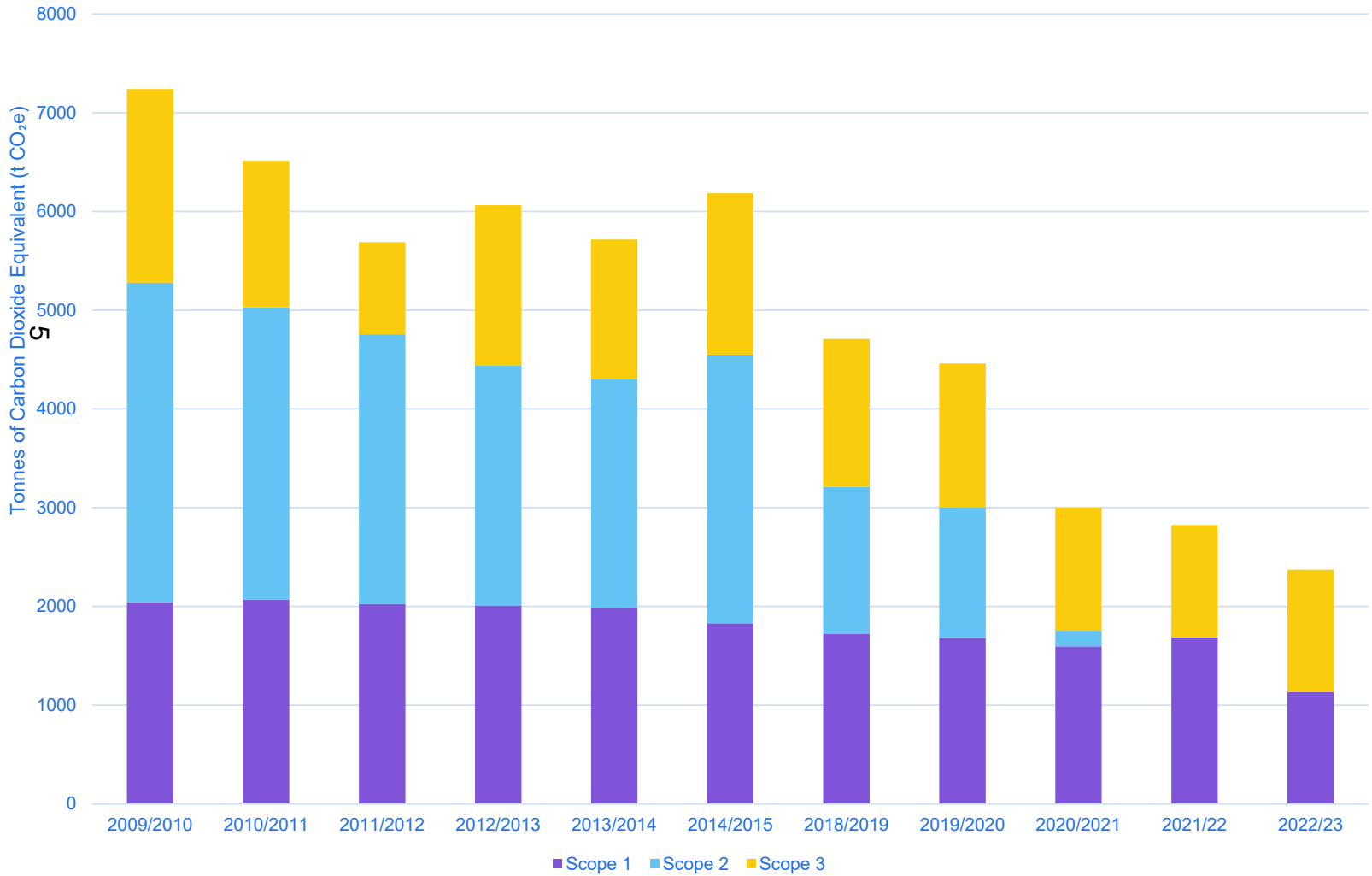
Petrol cars – increase 44%, 78%, 720%
Diesel cars – increase 26%, 45%, 51%

Contractor travel

Refuse – 1083.27

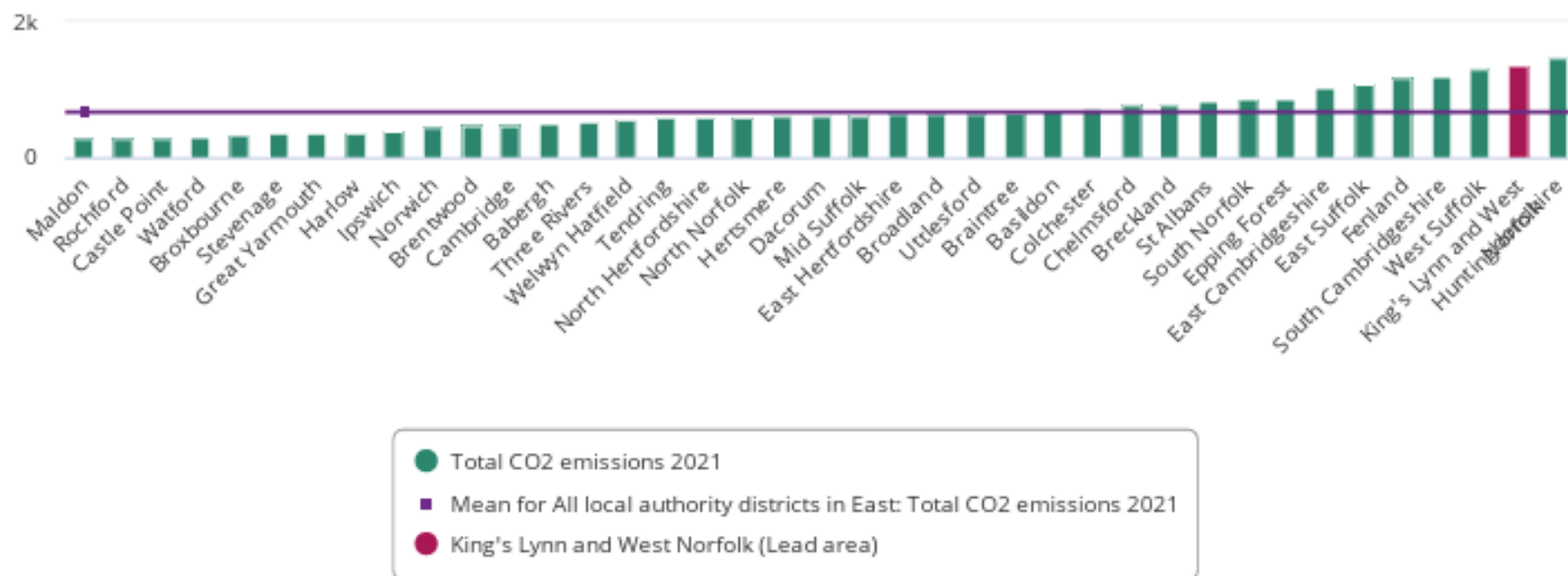
Council carbon footprint trends

BCKLWN Carbon Audit Emissions Changes



Territorial emissions

CO2 emissions estimates - Total (2021) for All local authority districts in East

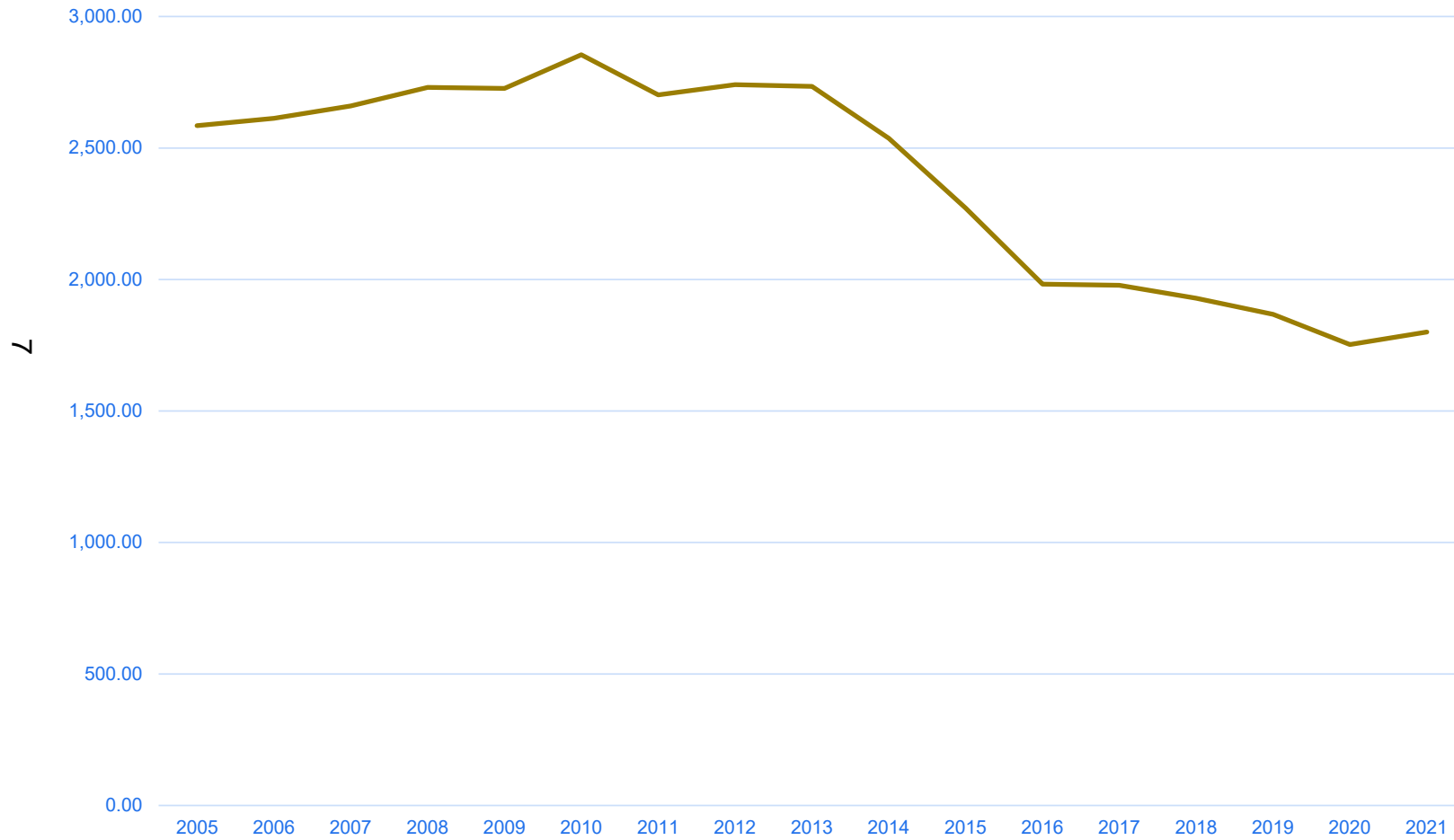


Source:

Department for Energy Security and Net Zero, UK local authority and regional greenhouse gas emissions national statistics, [CO2 emissions estimates - Total](#), **Data updated:** 30 Jun 2023

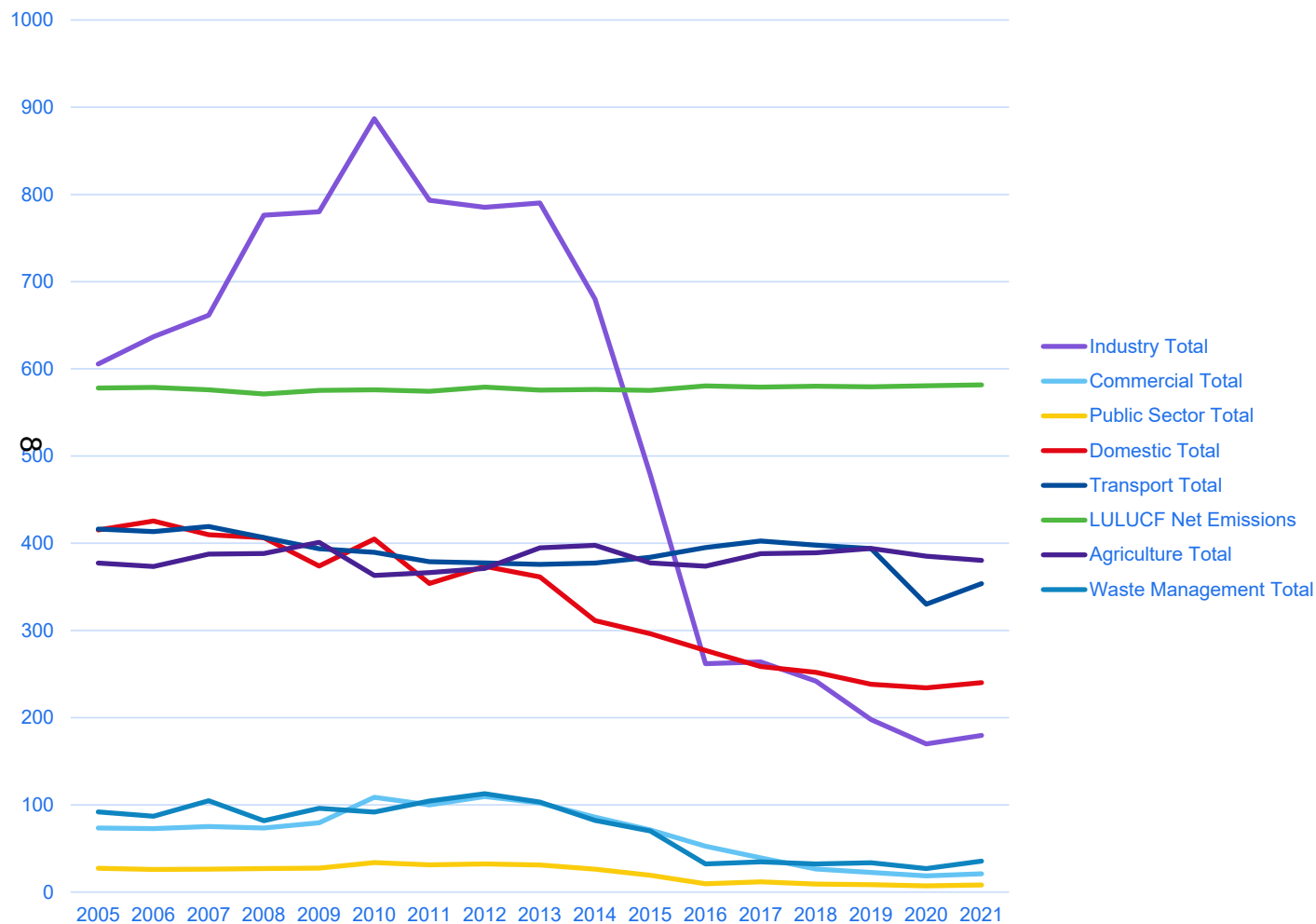
Territorial emissions

KLWN - Total CO2 emissions



Territorial emissions

KLWN - Total CO2 emissions



Overall reduction of 30%

Reductions

- Industry – 70%
- Commercial – 72%
- Public Sector – 70%
- Domestic – 42%
- Transport – 15%
- Waste Management – 61%

Increases

- LULUCF – 1%
- Agriculture – 1%

2 year lag, next data due June 2024

Action plan – Council emissions

Emissions source	Actions	Complete	In progress/ Ongoing
Scope 1: • Gas consumption • Vehicle fleet	4 7	2 2	2 5
Scope 2: • Electricity consumption	6	2	4
Scope 3: • Transmission and Distribution losses • Water Supply & treatment • Business travel • Contractor travel	3 1 1 3	1 0 0 1	2 1 1 2
Residual emissions • Green habitat/tree planting • Carbon credit	10 2	2 0	8 2
Other • Procurement • Corporate	1 14	0 8	1 6



Action plan

Emissions source	In progress/Ongoing
Scope 1: <ul style="list-style-type: none"> • Gas consumption • Vehicle fleet 	1. Re:fit Part 2 Public Sector Decarbonisation Grant to install ASHPs and GSHPs in council sites. 3. Establish a building retrofit programme, through a high-level assessment of our buildings, to create grant ready applications/projects. 6. Conduct a green fleet review through the Energy Saving Trust.
Scope 2: <ul style="list-style-type: none"> • Electricity consumption 	14. Establish a building retrofit programme, through a high-level assessment of our buildings, to create grant ready applications/projects.
Scope 3: <ul style="list-style-type: none"> • Transmission and Distribution losses • Water Supply & treatment • Business travel • Contractor travel 	19. Investigate commercial solar options through Re:fit Part 2. 20. Consider further Solar PV options as part of every subsequent Re:fit. 21. Investigate water consumption reduction options as part of each Re:fit. 22. Develop and produce a council business travel plan, to support working arrangements. 25. Continue to monitor future technology available for future refuse contracts.
Residual emissions <ul style="list-style-type: none"> • Green habitat/tree planting • Carbon credit 	27. Use our pilot tree planting programme as a worked example for local landowners. 28. Consider internal best value options for further tree planting and maintenance on council land. 29. Investigate woodland burial options. 30. Investigate memorial park/garden options. 31. Investigate future tree planting options associated with development. 32. Conduct a canopy cover and tree stock assessment for council owned land. 34. Investigate options for micro-forests.
Other <ul style="list-style-type: none"> • Procurement • Corporate 	38. Update the procurement strategy to include emissions reductions/climate change. 39. Review council climate change policy. 46. Annual strategy and action plan review. 49. Staff climate change updates and education through internal affairs. 50. Member climate change update and education through member bulletin. 51. Continue to update website with climate change work and information.



Action plan – Borough emissions

Emissions source	Actions	Complete	In progress/ Ongoing
Industry and Commercial	3	2	1
Transport	5	1	4
Domestic	11	6	5
LULUCF	4	2	2
Other	4	1	3

Action plan – Borough emissions

Emissions source	In progress/Ongoing
Industry and Commercial	3. Engage with the LEP clean growth strategy and monitor through the NCCP.
Transport	4. Develop and publish car parking strategy. 5. Investigate work areas through the Norfolk Climate Change Partnership. 6. Take forward EV charging network options in the district and across Norfolk. 7. Monitor any National, Highways England and LEP policies & strategies.
Domestic 12	13. Warm Homes Fund promotion and development in partnership with the lead authority. 14. HECA Report, Promoting ECOFlex and secure external funding where appropriate. 15. Continued engagement with Norfolk LA's with regards domestic energy efficiency projects and funding sources. 16. Explore opportunities for micro generation, e.g., solar collective purchasing scheme, promoting government grant funding etc. 18. Investigate options for district heating.
LULUCF	21. Support the Fens Biosphere Project. 22. Engage with the National Farmers Union.
Other	24. Support engagement at local awareness group events. 25. Continued promotion of resident carbon reduction measures through the website. 26. Conduct routine website updates

Additional activity not included in the climate change strategy

Council net zero by 2035
Territorial emissions net zero by 2050 (national target)

Reducing BCKLWN Emissions

1. Working arrangements framework
2. EELGA Procurement diagnostic

Reducing District Emissions

1. Business Awards
2. Housing Standards energy efficiency work
3. Beat Your Bills events
4. Council housing developments; ASHPs, solar PV, EV charging, insulation, etc
5. Active Clean Connectivity projects
6. Working arrangements framework
7. NCCP Norfolk Net Zero Communities project
8. UK Shared Prosperity Fund Investment Plan projects
9. Community Infrastructure Levy projects

13

Climate change reserve fund – Remaining

Item	Cost
Expenditure to date	587,454
Project pipeline	61,850
Plus external funding:	
• ORCS scheme	195,000
• Solar Together	5,000
Remaining	800,696

Proposed approach to updating the climate change strategy - update

Evidence	Vision	Strategy	Action plan
<i>Where are we now</i>	<i>Direction of travel</i>	<i>Where do we want to get to</i>	<i>How do we get there</i>
<ul style="list-style-type: none"> Carbon footprint Action plan progress Reserve fund 	<ul style="list-style-type: none"> Trends Carbon trajectory 	<ul style="list-style-type: none"> Policy/strategy update Net Zero by 2035 Geographic aim of 2050 	<ul style="list-style-type: none"> Action plan to 2027
April 2024	April 2024	Sept 2024	Dec 2024

Climate change strategy - strengths and weaknesses

Weaknesses / challenges

- Water cycle management.
- Large area of peat.
- Non-technical barriers.
- Householder and landlord ability to invest in energy efficiency/low carbon heating systems.
- Funding limited/High cost of interventions.
- Access to services and public transport.
- Energy infrastructure.
- Technology.
- Climate change adaptation.
- Capacity/transformation overload
- Additions to the footprint; supply chain and new premises

Strengths

- Developing experience of interventions; REFIT, Public Sector Decarbonisation Scheme
- Mayor's Awards; Exemplar businesses making significant investments
- Evidence that stakeholders wish to change and collaborate
- Pilot projects; Norfolk Net Zero Communities
- BCKLWN Climate Change reserve fund
- Integrating within strategy framework: Corporate Plan, Economic Strategy, Car Parking Strategy, etc
- Staff contributing across service areas

Opportunities and Priorities

Opportunities

- Supporting clean business growth
- Tackling skills issues
- Quality of life improvements
- Improvement in housing stock and energy costs
- Changing procurement regime
- Improved public assets

Priorities

- Decarbonising vehicle fleet
- Decarbonising council's estate
- Collaboration with stakeholders to support investment in decarbonisation, clean growth and green skills
- Stimulating Environmental Social Governance within supply chain
- Encouraging active travel
- Decarbonising the housing stock
- Enhancing biodiversity
- Risk assessment to inform adaptation
- Enhancing awareness of climate change
- Target setting